

### ✓ Weights

Machine	: 5.600 kg
Balast	: 2 x 1.100 kg
Total	: 7.200 kg

### ✓ Technical Specifications

Distribution	34 m
Distribution Area	908 m <sup>2</sup>
Vertical Reach	19.067 mm
Horizontal Reach	17.006 mm
1.Stage	6.160 mm
2.Stage	5.423 mm
3.Stage	5.423 mm
End Hose Length	3.000 mm
Foot Step	4.000 mm
Tail Turning Radius	3.000 mm

4x4 Traction System (Opt.) ✓

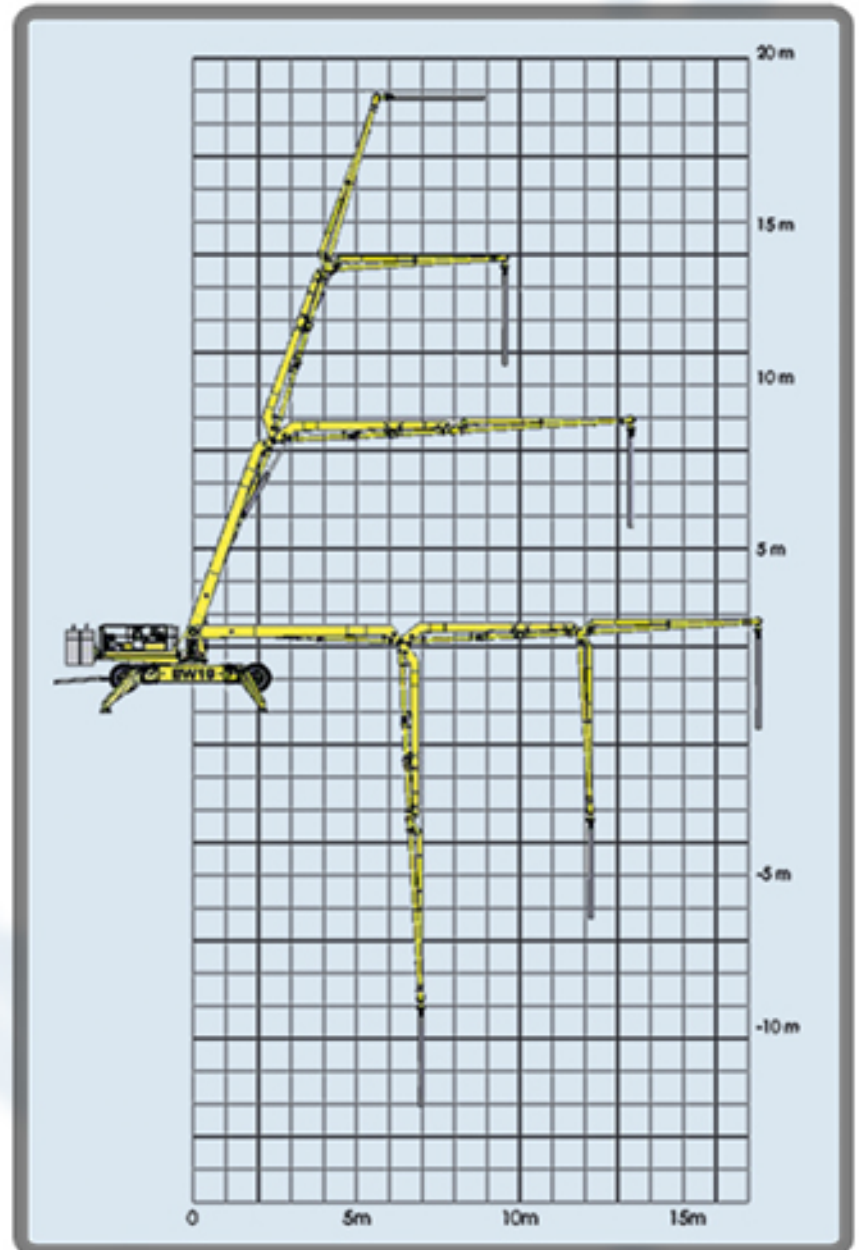
Self propulsion is with Kubota engine and Hydrostatic transmission

### ✓ Engine

Diesel	12 hp, single cylinder, air cooled, electric start
Petrol	13 hp, single cylinder, air cooled, electric start
Electric	7.5 kW, 3 phase, 380-420 V
Twin	Electric+ Diesel or Electric + Petrol

### ✓ Control Systems

Remote Control	: Wireless Control (Opt.)
Axis	: 4 Axis (3 stage and rotation)
Max. Pressure	: 200 bar
Hydraulic Tank	: 60 Liters
Main Control	: Selenoid valves
Second Control	: Manuel valves
Emergency Control	: Hand Pump





TRAILER TYPE CONCRETE PLACING BOOM