

# HYDRAULIC Placing Booms

Ultra Light **B 12 Series**

**TUNA**  
Construction Equipment

**B 212**

**B 312**



### Outstanding Features



**SPLIT FRAME;** boom unit is detachable from the main frame; handling and transportation is much easier. The main frame and the boom units can be lifted up separately and easily when the tower crane capacity is limited.



**OPTIONS;** radio remote control system allows closer approach to the concrete placing point, whereas 4-wheel cart set provides maximum mobility for large slabs constructions.



**TWIN DRIVE;** this option enables users to alter power source. In case of electric cut-offs, concrete placing can be finished without interruptions.



Tuna ultra light B 212-312 Boom Series are extremely versatile. They are the most convenient solutions for general purpose concrete placing.

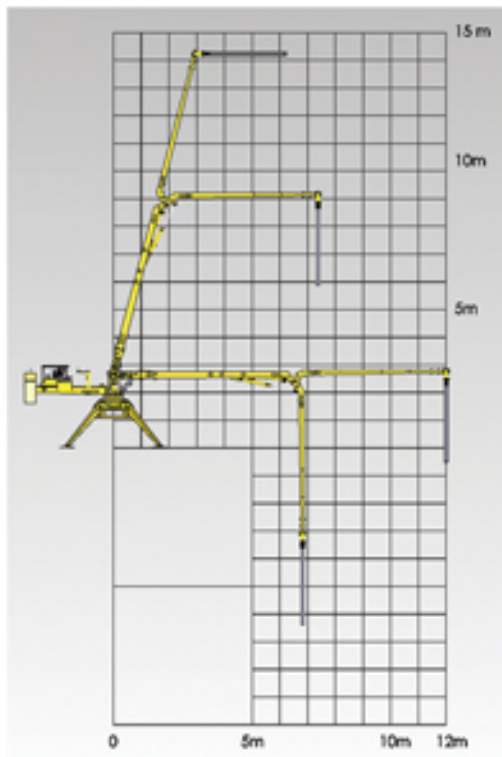


**FEATHER LIGHT;** the booms are made of high strength Swedish Steel. Furthermore, thanks to finite element analysis method involved in design, the ultra-light structure allows the unit to be repositioned very easily.

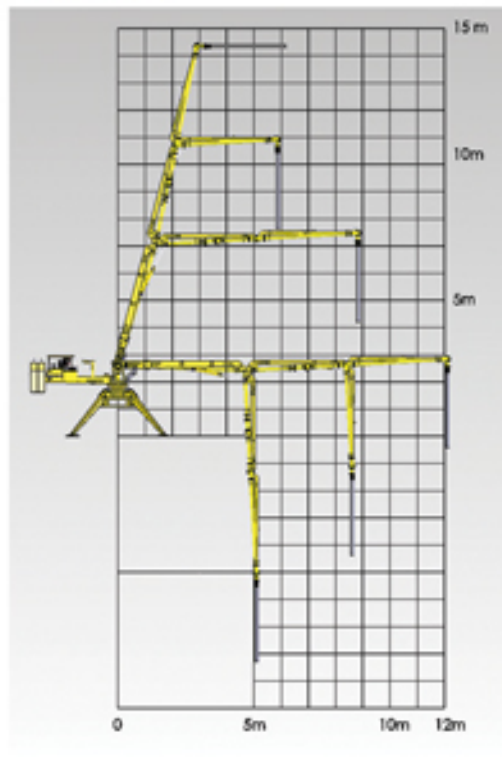


## Concrete Placing Booms

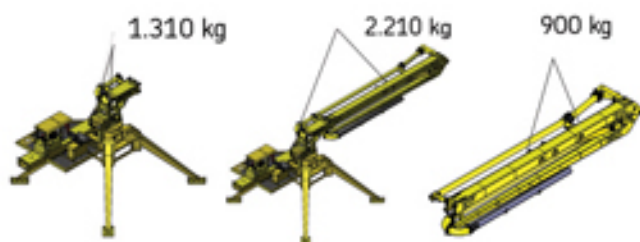
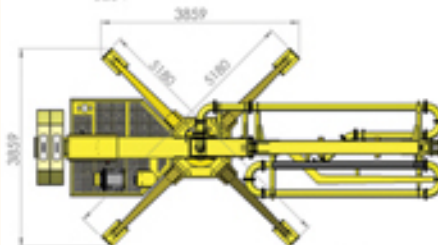
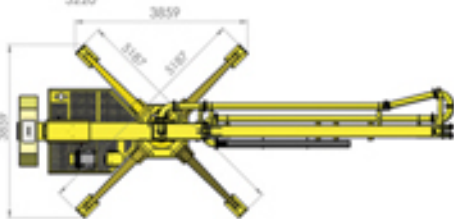
### B 212



### B 312



## Split frame lifting points and dimensions



## Specifications

### B- 212 Technical Specifications

Distribution diameter	24 m
Distribution area	452 m <sup>2</sup>
Machine weight	2.210 kg
Frame weight	1.310 kg
Split Boom weight	900 kg
Ballast weight	1.260 kg
Total boom length	12.000 mm
1st boom length	6.475 mm
2nd boom length	5.525 mm
End hose length	3 m
Rotation Angle	360 °
Remote Control	Wireless (Optional)
Electric motor	3 kW,380 - 400 V, 3 Phaze
Hydraulic Tank	60 lt.
Maximum hydraulic pressure	200 bar
Folded / Transportation Width	1.896 mm
Folded / Transportation Length	9.784 mm
Folded / Transportation Height	2.498mm

### B- 312 Technical Specifications

Distribution diameter	24 m
Distribution area	452 m <sup>2</sup>
Machine weight	2.360 kg
Chassis weight	1.330 kg
Split boom weight	1.030 kg
Ballast weight	1.500 kg (2 x 750 kg)
Total boom length	12.101 mm
1st boom length	4.665 mm
2nd boom length	3.718 mm
3rd boom length	3.718 mm
End hose length	3 m
Rotation Angle	360 °
Remote Control	Wireless(Optional)
Electric Motor	3 kW,380 - 400 V, 3 Phaze
Hydraulic Tank	60 liters
Maximum hydraulic pressure	200 bar
Folded length	7.974 mm
Folded width	1.954 mm
Folded height	2.498 mm



## Dimensions

